



Scan and download the APP

The final interpretation rights of this brochure belong  
to SHENZHEN YICHE TECHNOLOGY CO., LTD

SHENZHEN YICHE TECHNOLOGY CO., LTD

<http://www.keydiy.com/> 400-8262518



PHONE AS KEY PAK06 Manual

## Product Overview

- KD phone as key is a digital key developed based on Bluetooth technology, which can replace the physical key to unlock and start the vehicle. Even in underground garages with no network signal, basic functions such as unlocking and starting can be used.
- suitable for models with button start, without wiring or transfer.
- Supported vehicle models: Supports all models that can be generated by KD ZB series remotes and TB series remotes.
- Support online firmware upgrade function.
- Support keyless entry function.
- Support Bluetooth vehicle control function.
- Support non sensing unlocking and locking of vehicle doors.



## Product Catalog

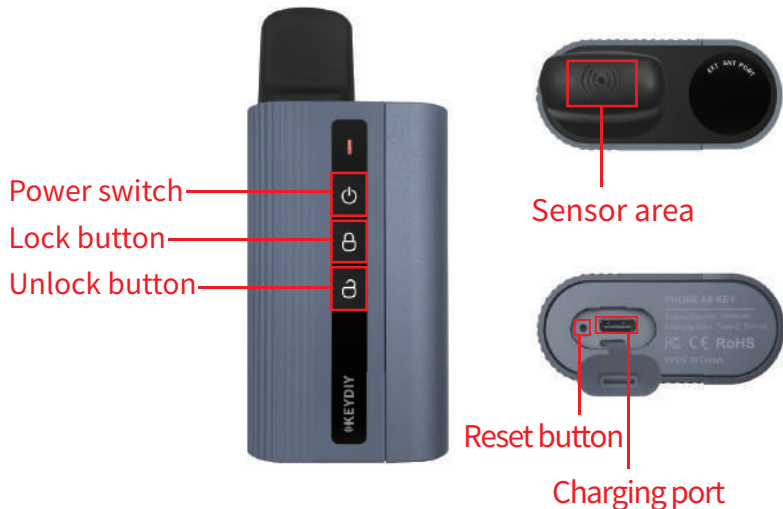
01	Product List.....	01
02	Appearance diagram.....	01
03	Technical Parameters.....	02
04	Switching mode/charging.....	02
05	Bluetooth connection, Modify password, Retrieve password.....	03
06	Mode setting.....	05
07	Installation and programming.....	06
08	Calibrate, Key less entry distance setting.....	07
09	Vehicle control via Bluetooth,Customize Button ,parameter setting.....	10
10	Device sharing, device receiving function.....	13
11	Device management function.....	16
12	Low battery charging reminder function.....	18
13	OTA upgrade function.....	19
14	Precautions.....	20

## 1. Product List

1. Phone as key ————— 1 pc
2. Charging cable ————— 1pc
3. Manual ————— 1 pc
4. Factory certificate of conformity ————— 1 pc

**Note:** Please check the list before installation, if there is a lack of accessories, please contact the supplier in time.

## 2. Appearance diagram



## 3. Technical parameter

Mainframe	
Test project	Test parameters
working voltage	3.7V-4.3V
Battery capacity	2600mAh
Charging specifications	Type-C 5V/1A
ambient temperature	-40°C- 85°C
ambient humidity	20% - 100%

## 4. Switching mode/charging

1. Power on: Press and hold the power button once, and the indicator light will remain on. During the long on process, press and hold the power button again. When the indicator light flashes three times, it indicates that the power on is successful and Blue-tooth can be searched.
2. Shutdown: Press and hold the power button once, and the indicator light will stay on. During the long on process, press and hold the power button again, and the indicator light will go out directly, indicating

that the device is turned off and Bluetooth cannot be searched.

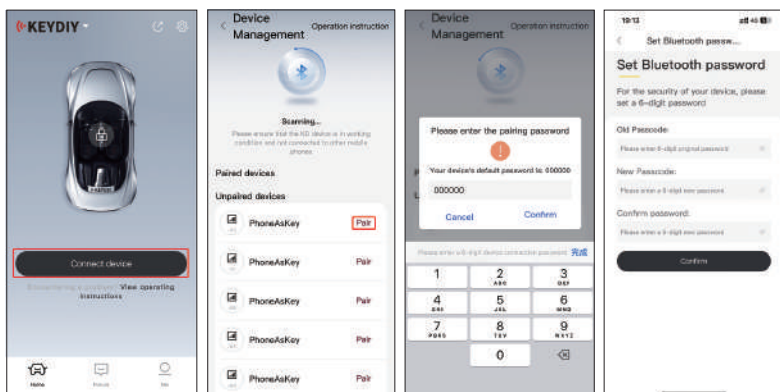
3. Charging: During the charging process, the indicator light will turn red; When full, the indicator light will turn blue.

## 5. Bluetooth connection, Modify password, Retrieve password

1. After turning on the device, open the "Phone As Key" app, click on the homepage to connect device - click on "start scanning"

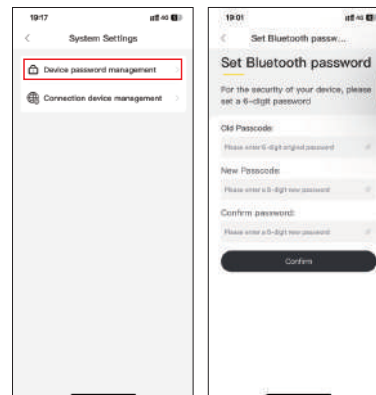
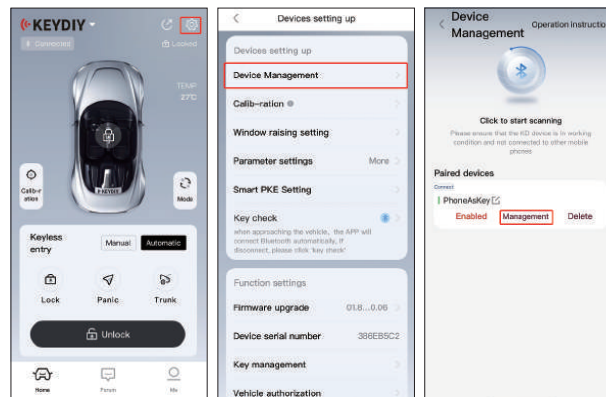
Select "PhoneAsKey", click "Pair", enter the pairing password, the default password is "000000"

For the safety of using the vehicle, customers need to reset their Bluetooth password for the first time.

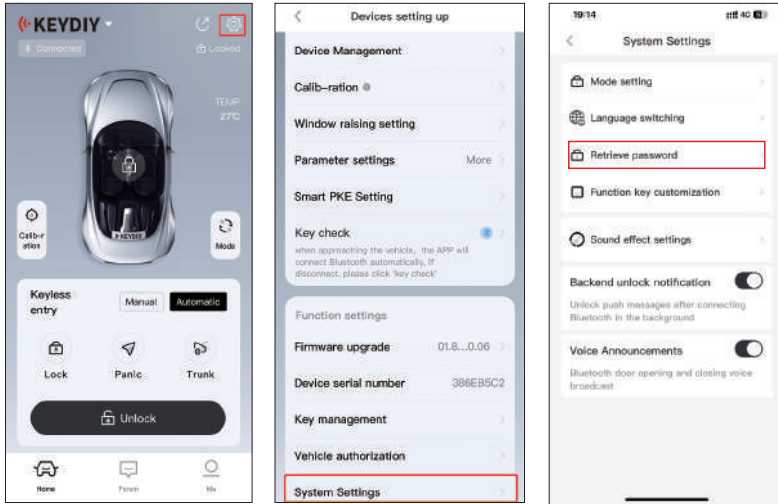


2. Method for setting Bluetooth password: Device Management - paired devices in the click on the "Manage" settings Bluetooth password, enter the original password, and then enter a new password such as "123456", confirm the password: "123456", click "OK" to modify the password.

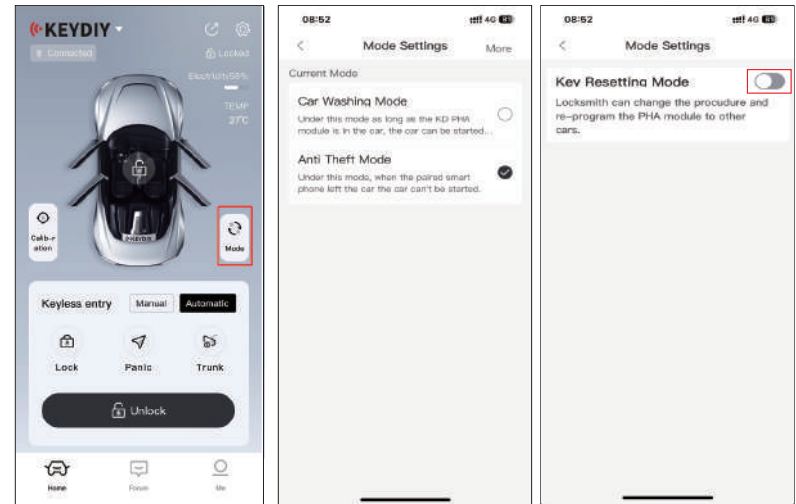
**Note:** Bluetooth pairing request must be clicked to agree to pairing, otherwise there is no automatic unlocking function.



3. Retrieve password: Home page click on the System Setting-Retrieve Password, the app will show the device password.



regular daily use mode, the cell phone leaves the vehicle, the vehicle automatically locks, no longer responding to the vehicle signal, and cannot start normally.



## 6. Mode setting

- vehicle Washing Mode: In vehicle Wash Mode, the phone will not lock the vehicle automatically when you leave the vehicle, as long as the PAK module is in the vehicle, the vehicle can still start normally, and the physical door opening and closing buttons are always available.
- Anti-theft mode: In the anti-theft mode, the PAK is the

## 7. Installation and Programming

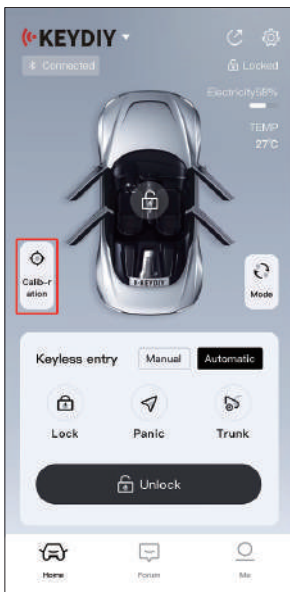
1. Before generating the remote options, first select the vehicle wash mode in "Mode - More Settings".
2. After the device is turned on, it will support generating, recognizing and programming, and then generate the required remote control options in the Mobile KD.
3. Use the programming device to program according to the key adding process.

4. After completing the programming, switch to the anti-theft mode, put the device in the vehicle (recommended to be placed in the armrest box), Check whether the function of the device is normal.

**Note:** Place the device as far as possible away from metal or wires to avoid signal interference.

## 8. Calibrate, Keyless entry distance setting

Once the PAK has been programmed, you can enter the calibration to set the automatic unlocking range.

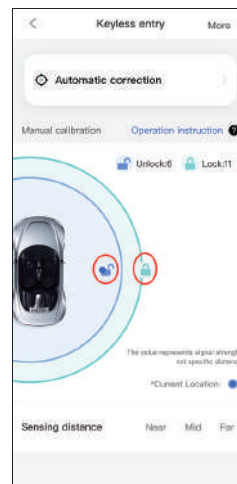


## Manual setting

1. Close the door and window of the vehicle, stand with the cell phone in hand at a place 3 meters away from the main driver of the vehicle and keep relatively still, drag the unlocking icon on the arc to your current position (the blinking point in the picture is the current standing position), and the unlocking distance calibration will be completed.

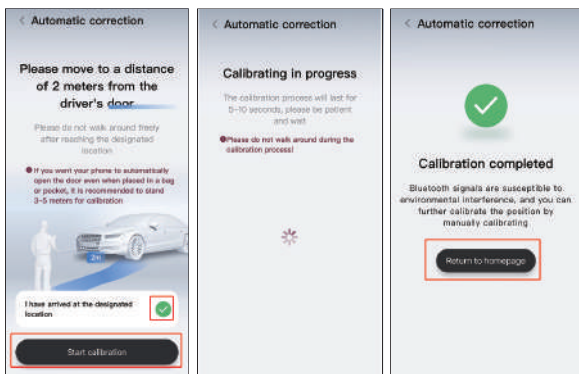
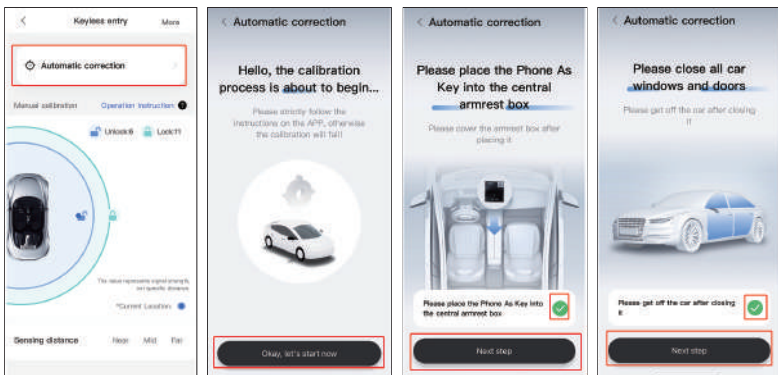
2. Close the doors and windows of the vehicle, hold the cell phone and stand at a distance of 5 meters from the main driver of the vehicle to keep relatively stationary, drag the lock icon on the arc to your current position (the blinking point in the picture is the current standing position), the locking distance calibration is complete.

**Note:** Adjust the distance according to your personal preference, Bluetooth signal instability, unlocking distance may be different in different environments.



## Auto setup

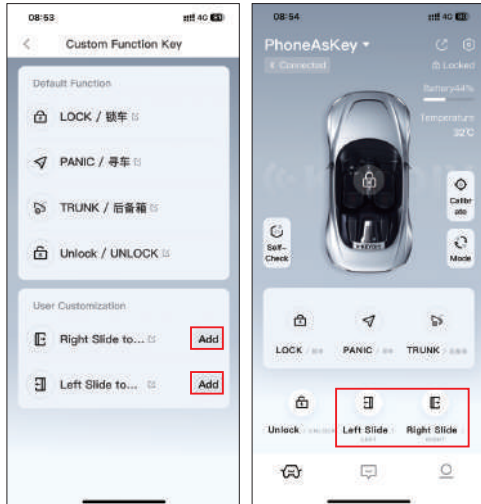
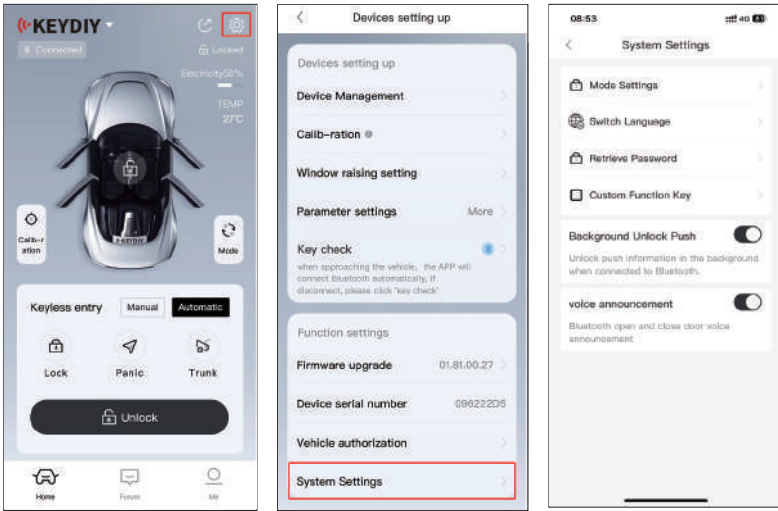
1. Connect the device, close the vehicle doors and windows, and hold the phone standing in the main driver of the vehicle 1-3 meters or the individual wish to unlock the range.
2. Click on automatic correction, follow the prompts on the interface to complete the operation, and after completion, you will be prompted that automatic calibration is complete



Tips: Different phones have different Bluetooth distances. Before use, it is necessary to calibrate according to the standard procedure. First, place the device inside the central armrest box and cover it. Then, raise all the windows and close the car door. Calibrate the phone at a distance of two meters from the car and select smart calibration. During calibration, do not move the phone's position.

## 9. Vehicle control via Bluetooth, Customize Button, parameter setting

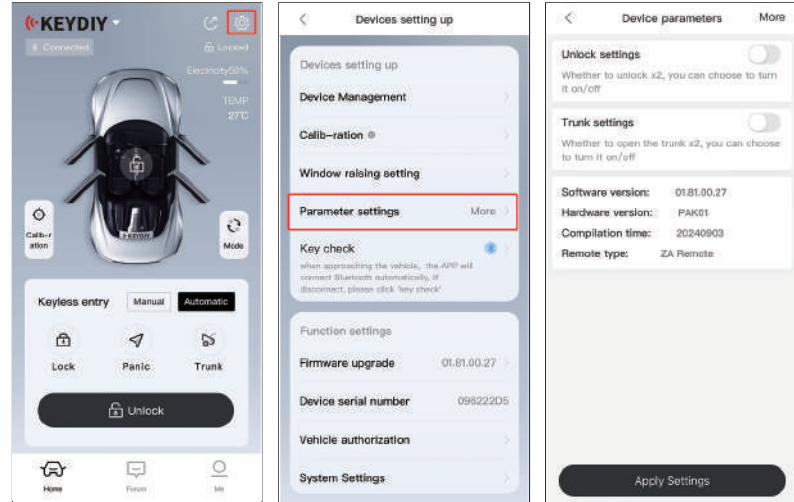
1. The device is automatically connected by "Mobile Key" APP and cell phone Bluetooth, which can realize the Bluetooth vehicle control function (locking, unlocking, trunk, searching for the vehicle), only the original vehicle remote control function;
2. You can customize the name of each key through Settings - System Settings - Function Key Customization, and you can add up to two additional keys on the home page.



## Device Parameter setting function:

Enter the main interface of the "Phone As Key" APP, click on the icon in the upper right corner to enter the parameter settings page

According to the actual situation of the vehicle, relevant parameters can be set, including automatic window closing, unlocking settings, trunk settings, and automatic Unlock/Lock when Approaching/Leaving. Click "Write Data" to complete the parameter settings.



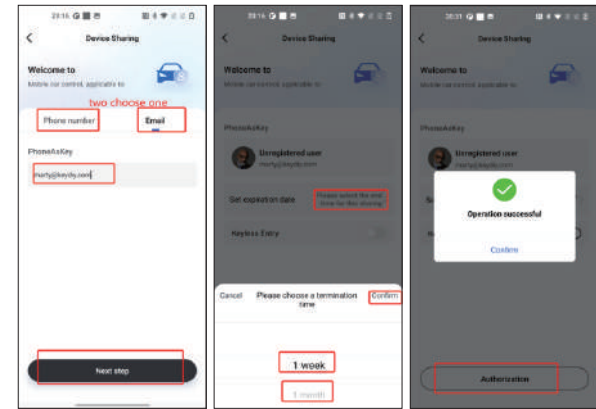
## 10. Device sharing and device reception

### Device sharing:

1. Enter Vehicle authorization and click to Add;
2. After filling in the user who needs to receive the device, set the sharing time and whether to enable the keyless entry function;
3. After setting up, click on Authorization.
4. After device sharing, you can delete or modify the end time in My Share. After deletion, the sharing will become invalid.

**Attention:** After the automatic unlocking is opened, the other party may still be able to control your vehicle after the sharing time ends. Please be cautious when opening.

Unregistered users can also receive authorization, and when the authorized corresponding account is registered, they can receive and use the vehicle within the Vehicle authorization.

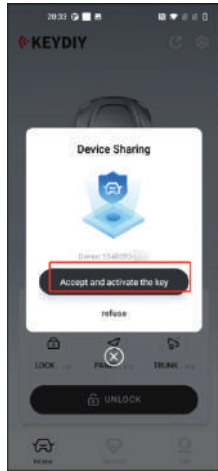


### Device reception:

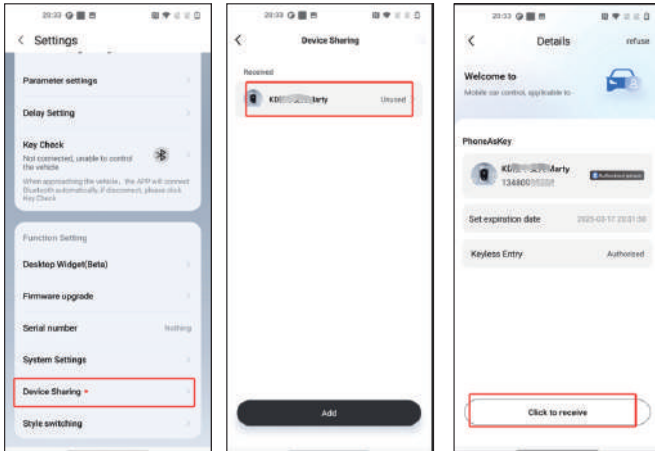
After receiving the shared device, you can see the corresponding vehicle in the vehicle sharing. Click 'receive' to connect to Bluetooth and control the vehicle

**Note:** Only one cell phone can be connected to a vehicle at a time. If it cannot be connected, please confirm if there are other mobile phones connected.

### Method 1:

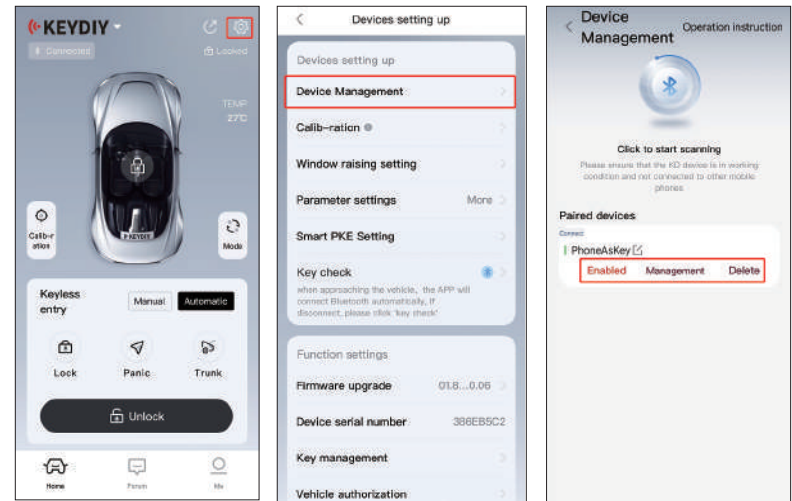


### Method 2:

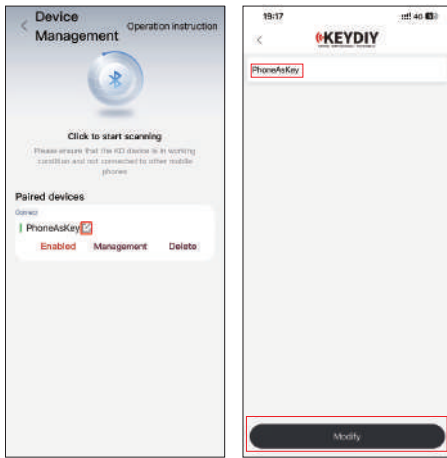


## 11. Device management function

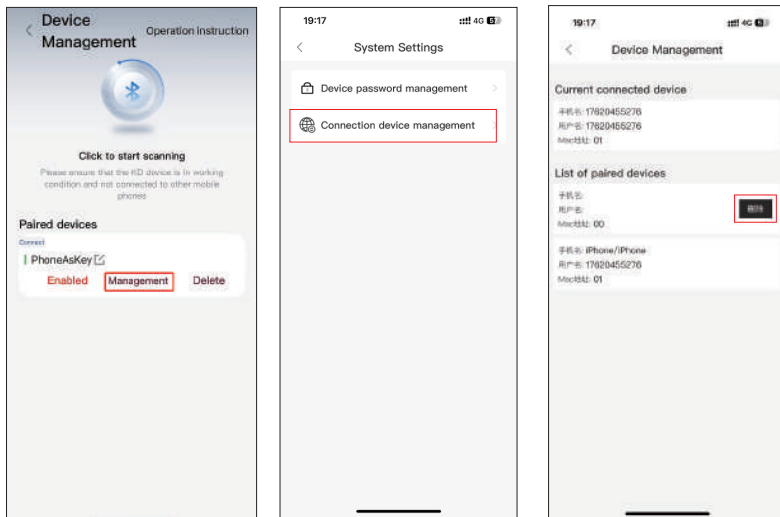
In device management, it is possible to modify the name of paired devices, manage connected devices, change passwords, and delete devices; Name modification allows customization of device names, making it easier to identify vehicles when multiple vehicles are involved.



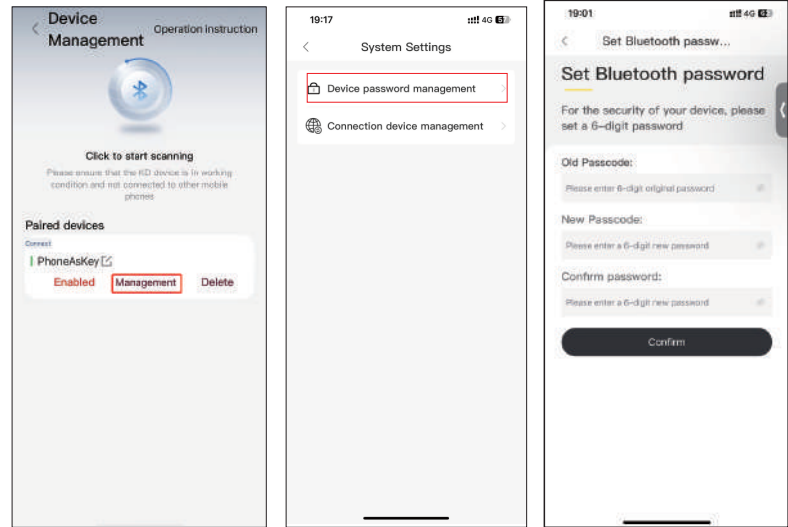
Name modification allows customization of device names, making it easier to identify vehicles when multiple vehicles are involved.



Device management can delete other phones paired with the device, but the shared devices received do not support deletion.




Password modification supports changing the connection password of the current device. After password modification, other phones need to be re paired before they can be used.

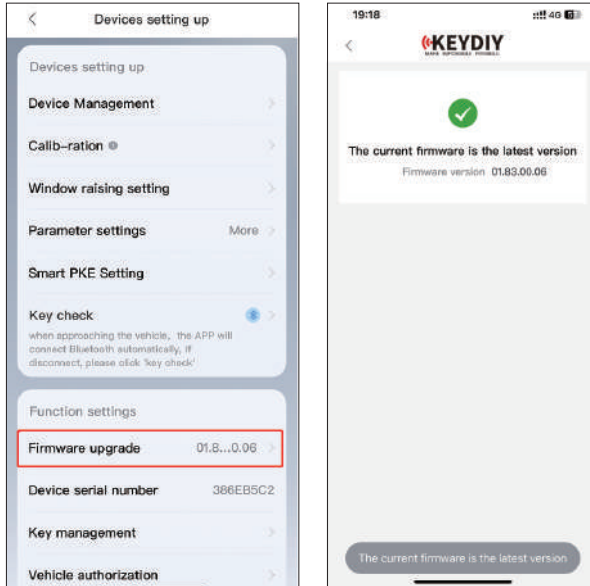


## 12.Low battery charging reminder function

When the battery level of the device is below 20%, the device will forcibly turn off the automatic unlocking lock function of the phone. After opening the APP, it will prompt that the battery level is low. Please charge it in time.

## 13.OTA upgrade function

Click on the top right corner  to enter Settings - Firmware Upgrade. When a new version is available, click "Start Upgrade" to upgrade online.



## 14.Precautions

- Please pay attention to waterproof, dustproof, and anti fall measures.
- Do not use the device in an environment with strong magnetic fields.
- Do not use chargers with mismatched specifications to charge this device.
- Please do not replace the device battery without authorization. If you need to replace the battery, you must contact the manufacturer to purchase the original battery. Otherwise, you will be responsible for any adverse consequences.

### Disclaimers

Please read the product manual carefully before installation and use, and then strictly follow the steps described in the manual for installation and use; If personal or property damage is caused due to improper installation or use, our company shall not be held responsible.